

Contents	
Contact information and legal notice	2
Introduction	2
JEFFSY Frame 27 CF specifications	3
Warnings and notes	5
Intended use	
Unpacking	7
Delivery contents	8
Bolted connections	8
Assembly	8
Laying the cables and hoses	9
Flip chip	11
Setting the suspension	11
Seat post clamp and seal	11
Rear wheel axle	12
Bottle holder	12
Assembling the parts	13
For your safety	13
Material defect liability (guarantee) and warranty	14
Frame identification	15

YT Industries GmbH  
Pilatus Campus 9  
91353 Hausen  
Germany

Authorized representatives:  
Markus Flossmann and Sam Nicols

Telephone: +49 9191 - 736 305 - 0  
Email: [service@yt-industries.com](mailto:service@yt-industries.com)  
Court of registration: Bamberg District Court  
Registration number: HRB 8353  
VAT ID Number: DE 254 214 335

YT Industries is a limited liability company under German law and is headquartered in Hausen.

Responsible for distributing and marketing the operating instructions:  
[inMotion.mar.com](mailto:inMotion.mar.com)  
[info@inmotionmar.com](mailto:info@inmotionmar.com)  
[www.inmotionmar.com](http://www.inmotionmar.com)

Contents and illustrations:  
Veidt-Anleitungen  
[anleitungen@thomas-veidt.de](mailto:anleitungen@thomas-veidt.de)

Legal inspection by a lawyer's office specializing in intellectual property.

© This document, or parts thereof, cannot be reproduced, reprinted, translated or used for commercial purposes, either in printed or electronic form, without the prior written consent of Veidt Anleitungen.

YT Industries - EN Version 1.0

## Introduction

GOOD JOB.  
**PUT YOUR TRUST IN YT: CHECK.  
ORDERED YOUR BIKE: CHECK.  
GOOD TIMES: CHECK.**  
CONGRATS & THANKS FOR THAT!

Please carefully read all warnings and advice in these assembly instructions before assembling the frame. If you give this frame/bike to someone else to use, be sure to give them these assembly instructions too.

These instructions will not teach you how to build the bike frame; you must have special skills and tools to assemble the frame.

All the information in these instructions refers to details regarding the assembly, use and engineering of the frame. Please take note of this information as much of it is safety related. Ignoring this information can result in serious accidents, falls and economic damages.

Do not use your JEFFSY frame until you have fully read, understood and implemented the contents of these assembly instructions and the user manual.

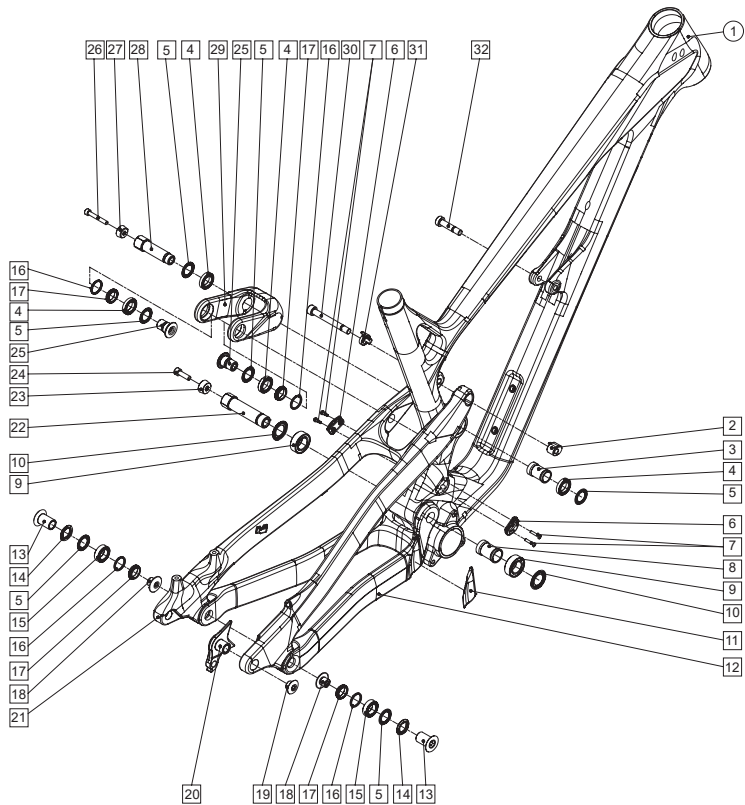
If you have questions or are unsure about any of the points covered in these instructions, please contact a specialist workshop or us. Our service team will be happy to help you.

You can reach us by sending an email to: [SERVICE@YT-INDUSTRIES.COM](mailto:SERVICE@YT-INDUSTRIES.COM)



## Assembly instructions YT JEFFSY Frame 27.5

### JEFFSY Frame 27 CF specifications

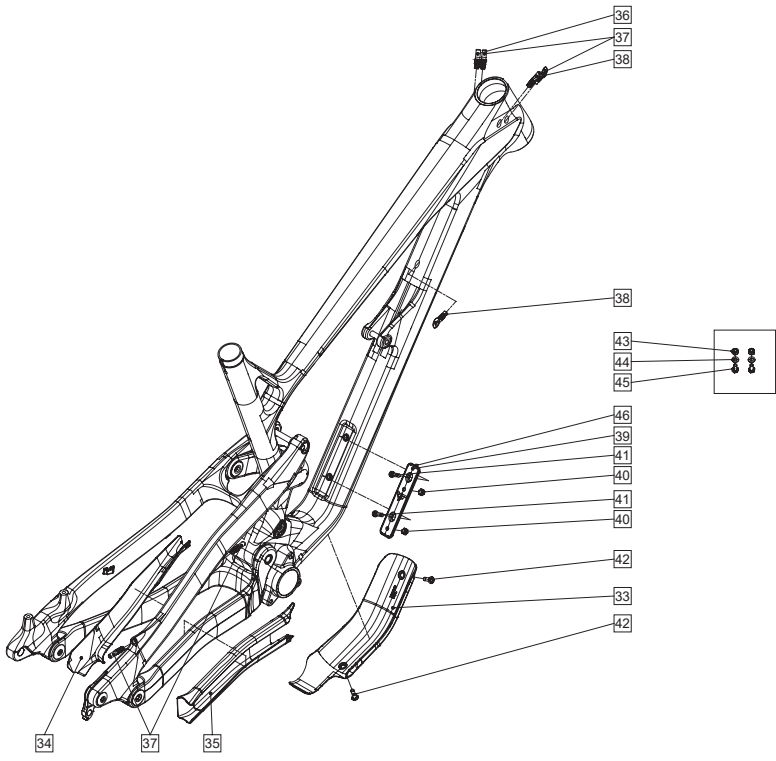


Number	Description	Quantity
1	Main frame	1
2	Flip chip	1
3	Spacer bushing 15x30	1
4	Bearing 61802-2RS	4
5	Washer 15x24	6
6	Cable clamp	2
7	Bolt M3x16	4
8	Spacer bushing 17x32	1
9	Bearing 3903-2RS	2
10	Washer 17x30	2
11	Chain-stay protector	1
12	Chain stay	1
13	Horst-link bolt	2
14	Spacer 15x24x2.5	2
15	Bearing 63802-2RS	2
16	X-ring	4
17	Spacer 15x21x4.5	4
18	Horst-link screw	2
19	Screw M12x1.5	1
20	Derailleur hanger	1
21	Seat stay	1
22	Axle swingarm main bearing	1
23	Bevel washer	1
24	Screw M6x20	1
25	Upper bearing pin	2
26	Screw M5x35	1
27	Conical washer	1
28	Axle lower bearing swinglink	1
29	Swinglink	1
30	Rear shock bolt	1
31	Flip chip	1
32	Front shock bolt	1

Phone: +49 (0) 9191 - 736 305-0  
Fax: +49 (0) 9191 - 736 305-111  
[service@yt-industries.com](mailto:service@yt-industries.com)  
[www.yt-industries.com](http://www.yt-industries.com)

YT Industries GmbH  
Pilatus Campus 9  
91353 Hausen  
Germany

### JEFFSY Frame 27 CF specifications



Number	Description	Quantity
33	Down tube protector	1
34	Seat stay protector	1
35	Chain-stay protector	1
36	Brake cable plug	4
37	Gear system cable plug	6
38	Cable plug	2
39	Bottle holder cover/adaptor	4
40	Sealing plug for bottle holder	1
41	Screw M5x16	2
42	Flat-head bolt M5x16	2
43	M5 nuts	1
44	Washer DIN125	1
45	Screw M5x10	2
46	O-ring 70x2 mm	2

Frame sizes	S, M, L, XL, XXL		
Material	UM carbon, HM carbon		
Rear suspension travel	150 mm / 160 mm		
• Seat post	31.6 mm		
Minimum seat post lowering depth	100 mm		
• Seat tube clamp	35.6 mm		
Headset dimensions	ZS 44 (1 1/8") / 56 (1.5")		
Bottom bracket	92 mm Pressfit bottom bracket / GXP		
Standard brake bracket	PM 180		
Rear brake caliper screw	According to the brake manufacturer's instructions		
Rear wheel mounting dimensions	148 X 12 mm (Boost)		
Rear quick release axle	M12 X 148 X 1.5 mm		
Bracket for bottle holder	Yes		
Dropper post ready	Yes		
ISCG05	Yes		
Max. tire clearance	27.5" 2.4" / 62 mm		
Weight (g)	Size	HM	UM
	S	2,960	2,600
	M	3,075	2,700
	L	3,080	2,720
	XL	3,170	2,780
	XXL	3,250	2,820
Chainline	52 mm Boost		
• Rear wheel disc brakes	max. 203 mm		
Max. fork installation length	552 mm		
Shock absorber installation length X Stroke	230 X 60 => 160 mm		
• Suspension travel	230 X 65 => 150 mm		
Seat post max. length (mm)	Size	mm	
	S	220	
	M	220	
	L	245	
	XL	275	
	XXL	275	

## Warnings and notes

You will find four different types of warning in these assembly instructions. When you see these symbols, there is always a risk that the danger that they describe may occur! The text that the warning covers always has a grey background.

The types of warning are as follows:

**Note**  
This symbol provides information about how to use the frame or points out specific parts of the instructions that are particularly important.

**Attention**  
This symbol warns of misuse which could result in damaging the product or the environment.

**Danger**  
This symbol indicates a possible risk to your life and health if appropriate maintenance actions are not performed or insufficient precautions taken.

**Important bolted connection**  
Precise torque must be applied here when tightening. The correct tightening torque is either displayed on the part or listed in the relevant part of these instructions. Adhere to any specified tightening torque values for parts. To apply a precise tightening torque, you must use a torque wrench. If you do not own a torque wrench, have this work carried out by a specialist workshop! Parts that have not been tightened correctly can loosen or break.

## Legal requirements

Before riding your bicycle on public roads, you should make sure that you are aware of the applicable national regulations in your country and follow them.

## Intended use

**Dangers of improper use**  
Only use your JEFFSY for its intended use. Assembling the frame correctly counts as part of the intended use, as does compliance with the operating, servicing and maintenance conditions (see the section on material defect liability in these instructions). You must also inform any other users of the intended use and the dangers of not adhering to it. Improper use, overloading and lack of maintenance can lead to accidents and falls resulting in serious injuries to you and other people! If you are unsure about the frame's intended uses, ask YT-Industries.

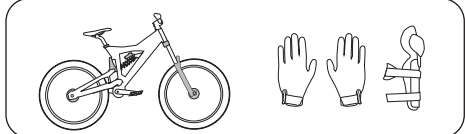
YT bikes are means of transport designed to be ridden by one person. The JEFFSY frame has not been NOT approved for transporting child seats, luggage racks or trailers.

The maximum permissible total weight (weight of the bike + rider + luggage) is 120 kg.

The JEFFSY frame is classed as an "All Mountain".



This classification applies to bikes that are used for descents on unpaved and almost impassable paths as well as on difficult terrain and undeveloped paths. Speeds should be kept under 40 km/h and jumps less than 120 cm.



You should always wear appropriate protective gear (i.e., helmet, biking gloves, and maybe protectors). YT-Industries cannot be held liable for any use that is outside the scope of intended use. This particularly applies to damage resulting from a failure to comply with the safety instructions, such as:

- Using the bike on very difficult terrain, for high jumps, extreme downhill riding or aggressive riding in bike parks
- Overloading or
- The improper repair of defects

The JEFFSY frame was not designed for extreme stress, such as use on extreme downhill trails, for very high jumps, in recognized competitions or for extreme tricks or stunts.

Make sure that the other parts that you combine the frame with are suitable, designed and compatible for this load class at least.

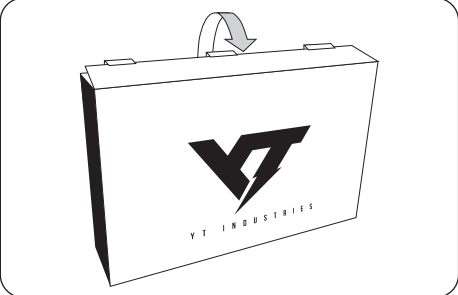
## Unpacking

Do not drop the box. Your JEFFSY frame is well packaged but can still be damaged if it is dropped.

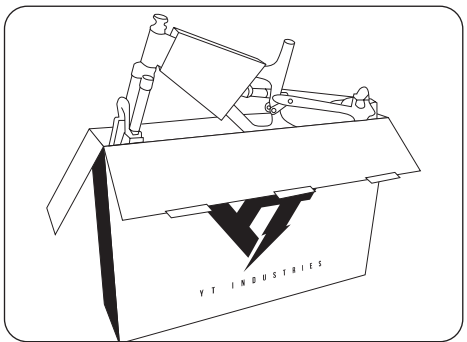
Do not unpack the frame if there are children present. They can get caught in the packaging material or swallow small parts and pieces of film and choke on them.

Be careful as metal staples may have been used to close the carton. Take care not to injure yourself on these staples.

Your JEFFSY frame will be shipped in a special transport box. Find a suitable space to assemble the frame.



Carefully lift the frame out of the transport box and place somewhere so that it is safe and secure. If necessary, ask someone to help you hold the frame. Remove the transport protection from the frame. Carefully open all cable ties with a pair of pliers or scissors.



Check the transport box to make sure that it is empty. Keep the packaging material in case you need to send anything back. We will be happy to take back unlicensed packaging materials free of charge at your request. All you have to do is send the materials back to us. This includes YT transport packaging. Please note, however, that you should keep hold of the packaging material in case you need to send your bike back (e.g., for repairs).

Dispose of any packaging that you are no longer using at a suitable disposal site correctly and in accordance with applicable regulations.

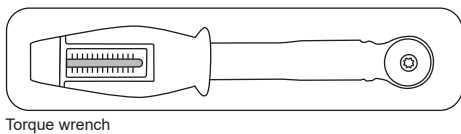


Delivery contents

- Frame
- Seat clamp with rubber seal
- Frame protectors
- Shock absorber bolt
- Rear wheel axle
- Accessory bag: Cable plugs, fastening fixtures for bottle holders

Bolted connections

All bolted connections on the bike must be tightened with the correct tightening torque (the correct tightening force) so that they are secure. Using too much or too little tightening torque can damage the bolt, nut or part. Use a torque wrench that displays when the desired tightening torque has been reached. You cannot properly tighten the bolted connections without this special tool! Adhere to any specified tightening torque values for parts. If you do not own a torque wrench, have this work carried out by a specialist workshop!



Torque wrench

Below you can find information about the usual tightening torques. This information is only intended as a guide. As a general rule, always adhere to the part manufacturer's specifications. Appropriate manuals are included with the parts when they are delivered. Further information can be found on the websites of the relevant part manufacturer.

If you see threadlocker on the bolts, always use new medium-strength threadlocker such as Loctite 243. You can identify this by the blue or red paste on the thread of the bolts.

Bolted connections on the frame	Tightening torque
Cable clamp (frame openings above the bottom bracket)	1.5 Nm
Rear wheel axle	12 – 15 Nm
Brake caliper fastening bolt	according to the manufacturer's instructions
Deraillleur (fastening bolts)	according to the manufacturer's instructions

Bolted connections on the frame	Tightening torque
Shock bolt	10 – 12 Nm
Seat post clamp	5.5 – 6 Nm
Frame protector fastening bolt	5 Nm
Bottle holder fastening bolt	1.5 – 2 Nm

Assembly

Always assemble all attachments and parts according to the part manufacturer's specifications. Adhere to all stated dimensions, tolerances and tightening torques.

Never clamp the carbon frame in your assembly stand directly. This can cause damage without you noticing. First, assemble a metal seat post (not a telescopic seat post). Clamp the frame to the assembled seat post.

Threads and bearing seats are delivered ready for assembly.

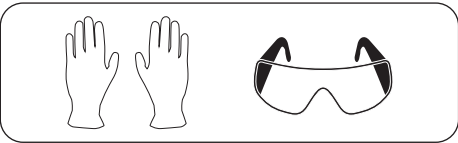
Carbon parts must not be milled.

Only use good quality tools. Only use suitable lubricants. Use carbon assembly paste when there are surfaces that come into contact with carbon parts. Carbon parts should NOT be greased or lubricated!

If the carbon frame falls over or is subject to a hard impact, it must be inspected. Carbon can be seriously damaged without it being clearly noticeable! If you are not sure if your frame is in perfect condition, do not use it. Have the frame checked over by a specialist workshop.

Modern bikes have high-tech equipment! Working on one requires expert knowledge, experience and specialist tools! If you are unsure or have any questions about the installation process, do not carry out the work on your frame/bike yourself! Hand your frame/bike over to a specialist workshop for assembly, repair, maintenance and servicing work!

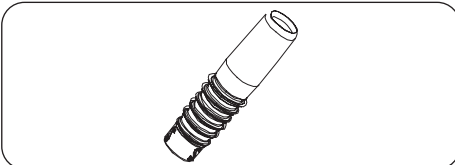
Wear suitable protective clothing, protective gloves and safety goggles during all assembly and maintenance work. If not, you may stain your clothes or suffer injuries caused by lubricants and other supplies.



After assembling and setting up your frame, check that all bolted connections and mountings are secure. If you are not sure if your bike is in perfect condition, do not use it. Have it checked by a specialist workshop.

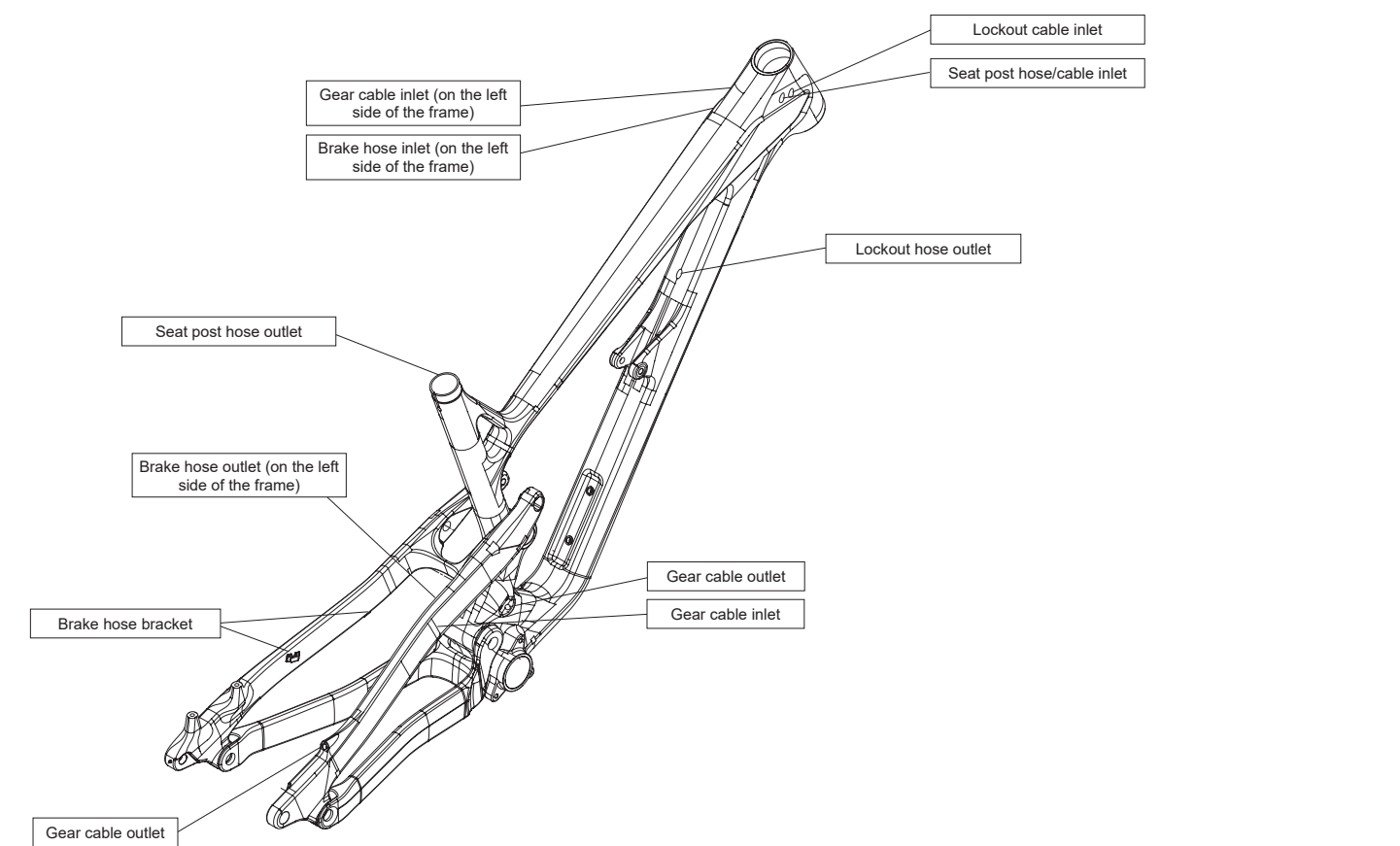
Laying the cables and hoses

There are several openings (inlets and outlets) on your JEFFSY frame. The hoses and cables for the rear wheel brake, seat post, shock absorber lockout and the gear cables are passed through the frame through these openings. Simply push the cables through the inner tubes. Insert a cable plug on the hose or cable before threading it through the frame inlet. The ridged side must face the frame opening.



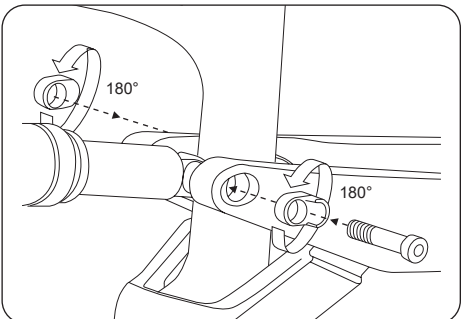
Cable plug

Attach a cable plug to the hose at the frame outlet on the down tube and seat stay. Once all the hoses and cables are in place, push the ridged area completely into the frame opening. Tighten the clamp for the brake hose and gear cable at the frame outlet. The tightening torque is **1.5Nm** . Attach the rear brake hose to the seat stay with cable ties. There are two holes provided for this. If you are using cable-free gears or a shock absorber without a lockout, cover the frame openings. Use cable plugs with closed flat ends. The hose or cable for the seat post ends in the seat tube. For the assembly, you need to pull it out of the seat tube. You can use a bicycle spoke to do this, for example.



Flip chip

With the flip chip you can adjust the geometry and handling of your bike according to your wishes.



Always remove the rear wheel before working on the flip chip. Hold the rear fork when removing the shock absorber bolts. Frame parts must not collide. This can damage the carbon frame.

Do not tighten the shock absorbers bolt if there is no shock absorber on the bike.

First, remove the shock absorber bolt from the relay lever with a suitable Allen key. Loosen the flip chip and turn it to the desired setting (Low or High).

Low position (the shock absorber bolt is further away from the seat tube): aggressive steering angle and stable when travelling on fast downhill sections.

High position (the shock absorber bolt is closer to the seat tube): steering and seat angles are 0.5° steeper and the bottom bracket is lifted by 8 mm. Demanding uphill sections can be climbed more efficiently. Reinsert the bolt. Follow the part manufacturer's specifications when installing the shock absorber. The tightening torque for the shock absorber bolt is **10–12Nm** .

Install your shock absorber without air or springs to test it. Make sure that the shock absorber can fully compress and decompress. It must be able to move freely. No parts should hit the frame.

Setting the suspension

Setting up the fork and shock absorber before your first ride. Having your suspension set up correctly improves both the performance and the comfort of your bike.

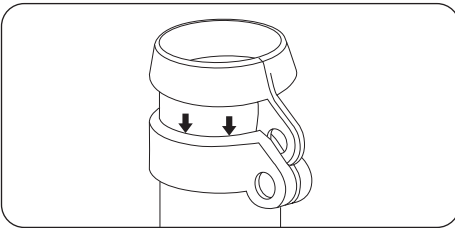
Suspension elements that have been set incorrectly can result in a loss of control and falling.

Read and follow the part manufacturer's instructions to set up the suspension correctly.

YT has put together some additional information to help you. Go to [www.yt-industries.com/de/service/suspension-setup/](http://www.yt-industries.com/de/service/suspension-setup/). Select your bike from the menu and click on "Show your setup". If your shock absorber or fork is not listed, you can download the "Suspension Guide" manual under "Need guidance?".

The information provided should only be used as a starting point, and you should adjust the values according to your driving style and/or the terrain.

Seat post clamp and seal

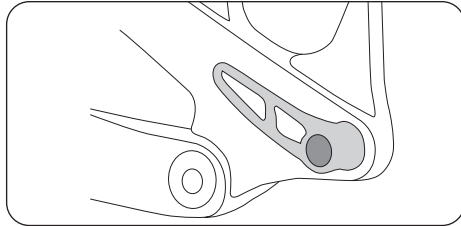


Position the rubber seal over the seat tube. It must be above the clamp to prevent dirt from entering. The tightening torque for the seat post clamp is **5.5–6Nm** .

Rear wheel axle

Never tighten the rear wheel axle if no wheel is mounted!

Unscrew the rear wheel axle by turning the lever counterclockwise. Once the thread has been completely loosened, you can use the lever to pull the axle out. The position of the lever can be adjusted once the axle has been tightened. Then pull out the whole lever. In this position, the lever can be rotated freely. The lever should be oriented forwards along the seat stay when you are riding your bike to prevent damage.



Bottle holder

There is a bracket for the bottle holder on the down tube. The bracket can be closed with a cover plate. You must remove the cover plate to mount your bottle holder.

- The Thirstmaster 4000 with Fidlock baseplate can be mounted directly on the bracket.

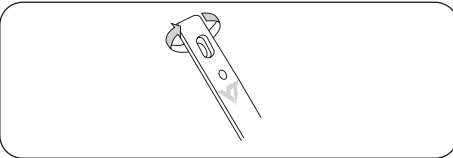
Please read and follow the Thirstmaster 4000 assembly instructions – [www.yt-industries.com/de/service/downloads/](http://www.yt-industries.com/de/service/downloads/)

- For other bottle holder systems, you will need to use the cover plate as an adapter. Use the set of bolts with washers and nuts included in the delivery to fasten it into place.

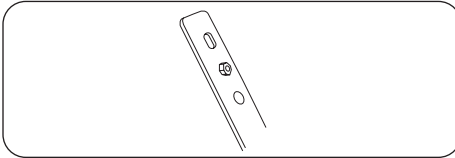
YT cannot guarantee that all bottle holder systems and bottles will fit your YT frame.

**Attaching the bottle holder (not Thirstmaster):**  
1. Remove the cover plate from the bracket. Get the two fastening bolts ready for later.

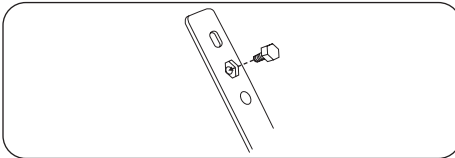
2. Turn the cover plate over.



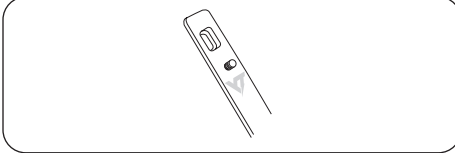
3. Remove the two sealing plugs.



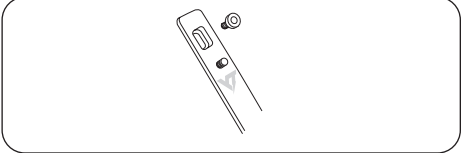
4. Insert two of the bolts from the set into the cover plate from underneath. The bolts should fit into the indentation perfectly.



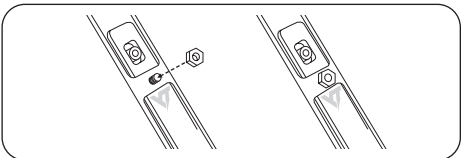
5. The threaded part of the bolt should stick out from the top.



6. Screw the cover plate and bolts to the down tube. Use the provided retaining bolts. The tightening torque is 2 Nm.



7. Place your bottle holder on the threads. Secure it with the washers and nuts. Apply the tightening torque specified by the bottle holder manufacturer. Otherwise, the tightening torque is **4Nm** .



Assembling the parts

Always attach all parts according to the part manufacturer's instructions. You can find these on the part manufacturer's website and in the manuals supplied with the parts. Make sure that the parts have been approved for Category 4 – All Mountain loads by the manufacturer. If you are not sure what to install or how to do it, contact us at [SERVICE@YT-INDUSTRIES.COM](mailto:SERVICE@YT-INDUSTRIES.COM).

For your safety

Check the following:

- Seat post and saddle are comfortably positioned and secured
- Stem and handlebars are comfortably positioned and secured
- Wheels are securely fastened to the frame and fork
- Braking system functions correctly and is secure. You can safely reach the brake levers at all times. The cables and hoses must always allow all possible steering movements. Hoses and connections must not be leaking if hydraulic brakes are used
- The rims are not damaged and can turn freely, particularly after riding off-road
- The tires have correct air pressure, a sufficient tread depth and are not damaged
- The suspension elements are working and safely secured
- Secure fit of bolts, nuts, quick-release axles and quick release fasteners, even if the bike was only left unattended for a short period of time
- There is no deformation or damage on the frame or fork
- Clipless pedals: Please check that they are working properly. The pedals should release easily and smoothly

If you notice a problem during these checks or if you are unsure about anything, do not use the bike! Contact YT-Industries or ask a specialist workshop before using your bike again.

Material defect liability (guarantee) and warranty

The quality of our bikes is of paramount importance. As such, since 2018, in addition to the statutory two-year guarantee period, we have also given all our customers an additional three-year warranty for all YT frames. However, we do not guarantee bearings, shock absorbers and forks or damage to the coating or anodizing. More detailed information can be found in our terms and conditions.

Report a warranty claim

How to proceed: Here you can quickly and easily report a warranty claim or make use of your guarantee. All we need is your original invoice – regardless of whether you are the first owner or bought the bike second-hand. With this information, we can quickly and easily find out whether your problem can be classed as a warranty claim. <https://us.yt-industries.com/service/support/warranty/>

What is a guarantee, and what is a warranty? You can find the answer in our FAQs. <https://us.yt-industries.com/service/faq/>

The conditions for the warranty/material defect liability are partially harmonized in Germany/Austria and all countries that are subject to EU law. You are responsible for finding out about the national regulations that apply to you.

Within the scope of EU law, the seller is liable for material defects for at least the first two years following the date of purchase. This includes defects that were present at the time of purchase or handing over. In addition, during the first twelve months it is assumed that any defects already existed at the time of purchase. Modern mountain bikes are complex vehicles. Therefore, all servicing and maintenance intervals must be observed properly. Omitting servicing and maintenance puts the claim of the seller at risk if the malfunction or defect could have been avoided by servicing or maintenance. You can find out what maintenance needs carrying out and when by contacting us at: [SERVICE@YT-INDUSTRIES.COM](mailto:SERVICE@YT-INDUSTRIES.COM) You can order a professional service either directly from a specialist workshop or through: [www.yt-industries.com/de/service/support/maintenance-repair/](http://www.yt-industries.com/de/service/support/maintenance-repair/)

In Germany/Austria, you can request subsequent fulfilment as a first step. If this fails, which it is assumed to after two attempts, the customer has the right to a reduction or can terminate the contract.

In Switzerland, liability is limited to one year from the date of purchase. If a fault occurs or a defect appears, you can choose between restitution, reduction and subsequent delivery or, in all cases, subsequent improvement.

The liability for material defects does not cover normal wear and tear that occurs when the frame is used for its intended use.

Parts of the drive and braking devices, as well as tires, lighting and contact points between the rider and the bike are susceptible to wear and tear because of their function.

Frame identification

Customer:

Name \_\_\_\_\_

Address \_\_\_\_\_

\_\_\_\_\_

\_\_\_\_\_

Date \_\_\_\_\_

Signature \_\_\_\_\_

In the case of change of ownership:

Name \_\_\_\_\_

Address \_\_\_\_\_

\_\_\_\_\_

\_\_\_\_\_

Date \_\_\_\_\_

Signature \_\_\_\_\_

Frame identification:

Model \_\_\_\_\_

Frame height/size \_\_\_\_\_

Color \_\_\_\_\_

Frame number \_\_\_\_\_